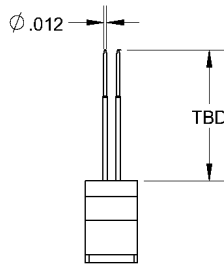
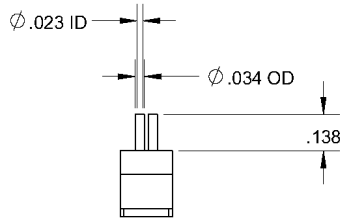


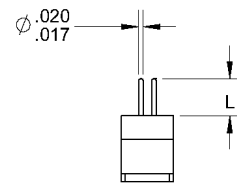
## TERMINATION STYLES RECEPTACLE



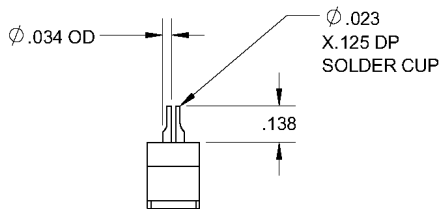
**FAE  
STACKING**  
Termination length  
is Application Specific



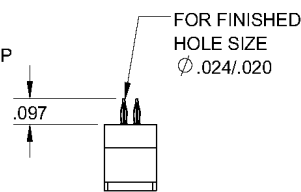
**FCE0  
CRIMP**  
Accepts 26-28 AWG WIRE



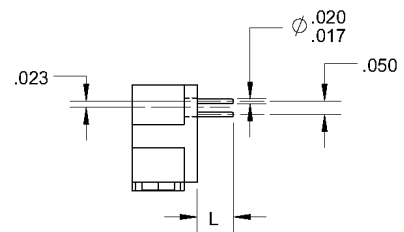
**FDE  
DIP SOLDER STRAIGHT  
'L'**  
1=.109  
2=.140  
3=.172  
4=.234  
9=User Defined



**FSE0  
SOLDER CUP**  
Accepts Up To 26 AWG WIRE



**FVE0  
COMPLIANT**



**FEE  
DIP SOLDER RIGHT ANGLE  
'L'**  
1=.109  
2=.140  
3=.172  
4=.234  
9=User Defined