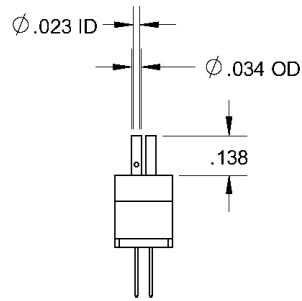
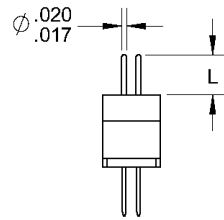


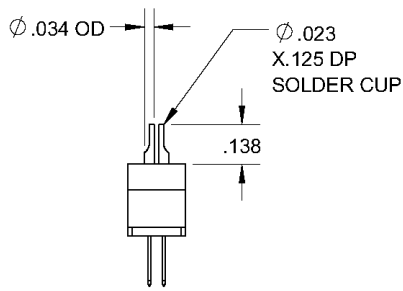
## TERMINATION STYLES PLUG



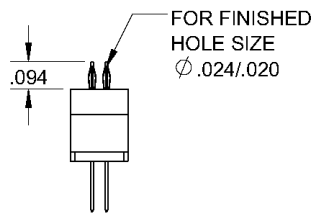
**MCE0  
CRIMP**  
Accepts 26-28 AWG WIRE



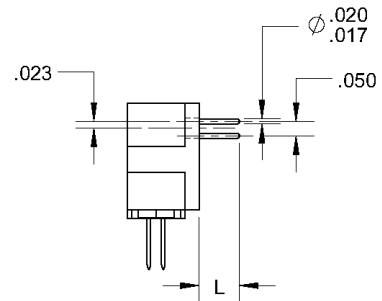
**MDE  
DIP SOLDER STRAIGHT**  
'L'  
1=.109  
2=.140  
3=.172  
4=.234  
9=User Defined



**MSE0  
SOLDER CUP**  
Accepts Up To 26 AWG WIRE



**MVE0  
COMPLIANT**



**MEE  
DIP SOLDER RIGHT ANGLE**  
'L'  
1=.109  
2=.140  
3=.172  
4=.234  
9=User Defined