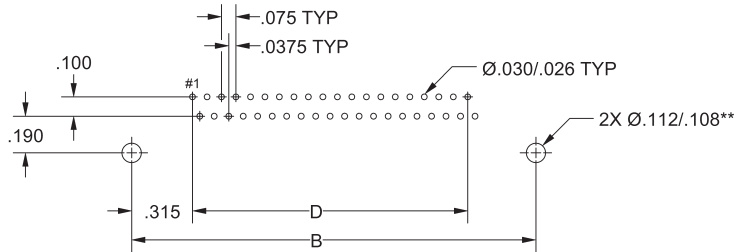


PWB PATTERNS

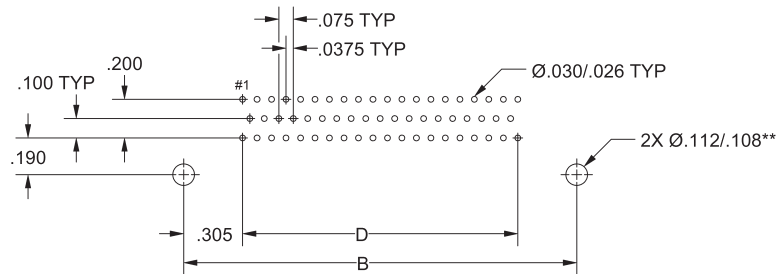
RECEPTACLE - DIP SOLDER & SURFACE MOUNT

ALL VIEWS ARE FROM COMPONENT SIDE

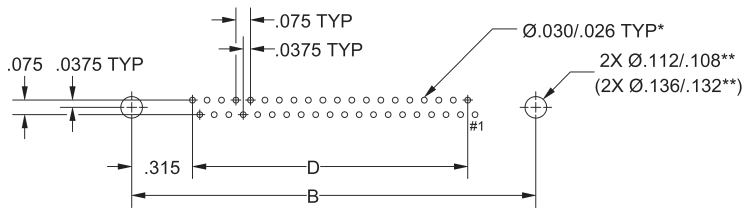
FEE 2-ROW
DIP SOLDER RIGHT ANGLE



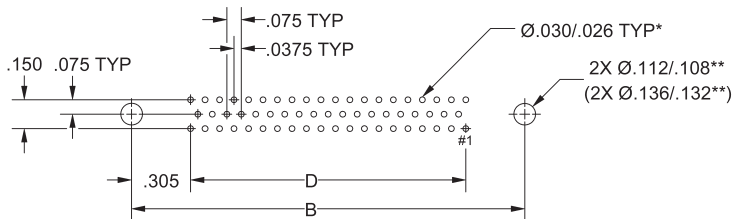
FEE 3-ROW
DIP SOLDER RIGHT ANGLE



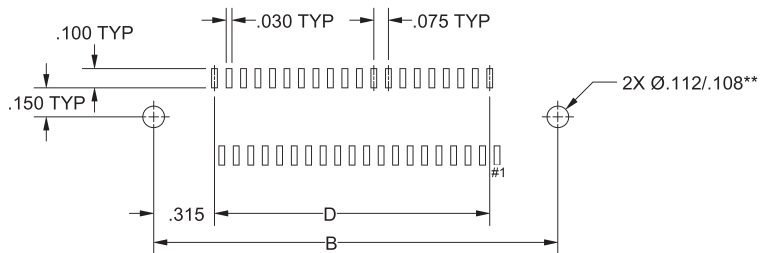
FDE 2-ROW
DIP SOLDER STRAIGHT
(FAE 2-ROW STACKING)



FDE 3-ROW
DIP SOLDER STRAIGHT
(FAE 3-ROW STACKING)



FRE 2-ROW
SURFACE MOUNT



*REQUIRED HOLE SIZE FOR COMPLIANT TERMINATION STYLE CONTACTS. FOR ALL OTHERS, HOLE SIZE SUBJECT TO USER MODIFICATION FOR APPLICATION OR ALTERNATIVE STANDARDS.

**RECOMMENDATION. MAY BE MODIFIED FOR APPLICATION OR ALTERNATIVE STANDARDS.